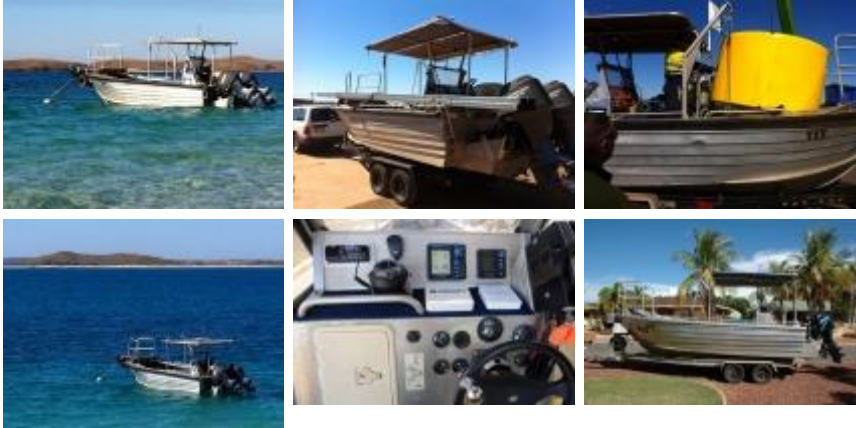


Commercial Bareboat Hire (2C Survey)

"Tin Thing" is a 6.8m commercial workboat with 2, 4 stroke Mercury 115 XLPT motors, it is in 2C survey for 5+1 persons. The operating limit up to 15nm from mainland coast allows for a generous workscope as a crew transfer, utility or standby vessel. Manoeuvrability and ability to launch daily from smaller or makeshift boat ramps throughout the Pilbara offers flexibility for the hirer. Coxswains certificate required (or Restricted coxswains limited to 5nm).



Daily rate for "Tin Thing" is \$700 per day plus GST. Fuel is at the hirer's expense.
MERCURY 115 XLPT & 115CXLPT SEAPRO



Example of vessel set-up for diving operations.



On hire as safety/rescue vessel for wharf construction.

